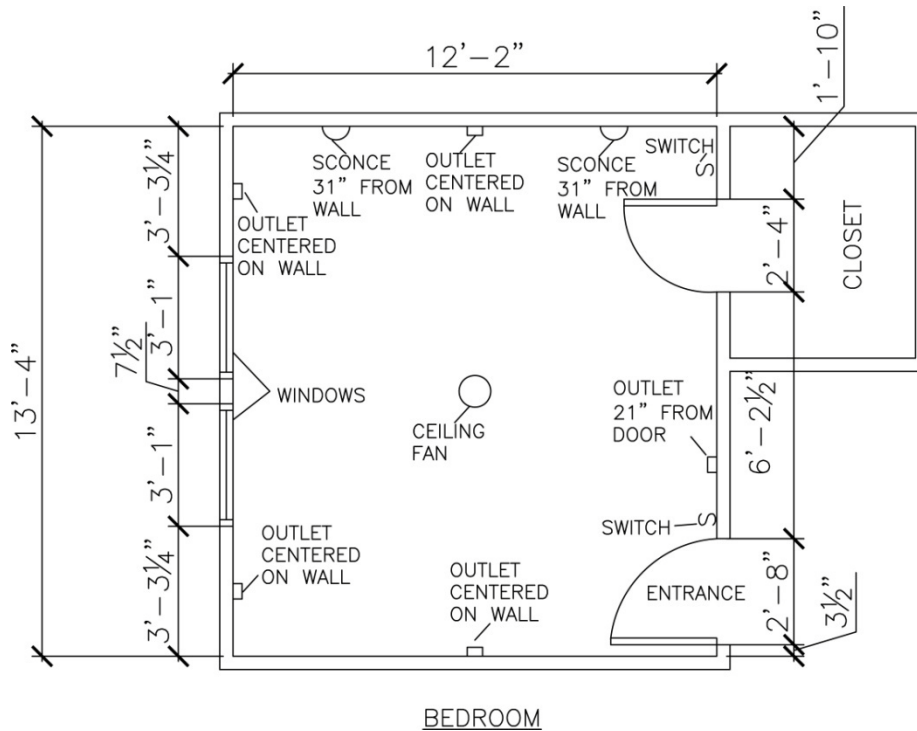


# D.I. Studio

## Measuring your room

1. Measuring your room(s) is very simple. Simply sketch out the outline of the room(s). Make sure you include any closets, doors, windows, built-in cabinets, electrical outlets, lighting fixtures, etc.
2. Use a tape measure to measure all the walls. Please measure the following...
  - Length of walls
  - Windows (height, width, height from window sill to floor)
  - Height of ceiling to floor
  - Distance between electrical outlets and switches
  - Lighting fixtures on the ceiling and/or walls
  - If you would like to use existing furniture in your design include those measurements as well
3. Next, take a picture facing each wall from floor to ceiling. You may photograph additional items and lighting fixtures that you plan to keep.
4. Finally, make sure all your measurements are correct and that you included everything. When you have completed your sketch & measurements, you may fax or email them along with all your room photographs.



WINDOWS  
 HEIGHT: 47"  
 SILL TO FLOOR: 35"

OTHER NOTES  
 ROOM HEIGHT: 7'11"  
 FLOORING: CARPET

NOT KEEPING ANY  
 FURNITURE